

Inspection, testing, rope access

Ensure compliance and optimise integrity with a wide range of traditional and advanced examination and testing techniques

Regular examinations by qualified inspectors are essential to:

- Maximise safety and integrity
- Ensure the reliability of safety critical equipment
- Optimise maintenance intervals to improve efficiency and reduce costs
- Provide evidence of compliance to internationally recognised standards

Our strategically placed teams of multi-skilled inspectors have capabilities that span the spectrum of inspection and ancillary services from routine one-man jobs to full scale special periodic structural inspections.

All of our reports and certificates are quickly and easily accessed through our online customer portal.



Non-Destructive Testing

Conventional and advanced Non-Destructive Testing (NDT) techniques we use include:

- Close Visual Inspection (CVI)
- Magnetic Particle Inspection (MPI)
- Liquid Penetrant Inspection (LPI)
- Ultrasonic Testing (UT)
- Eddy Current Testing (ECT)
- Alternating Current Field Measurement (ACFM)

Phased Array Inspection (PAUT) is an advanced technique that uses ultrasonic rays. It is relatively non-intrusive and usually requires minimal dismantling for access. It is an ideal method when you need a fast technique that minimised down-time.

All NDT surveys can be carried out via rope access which is a cost-effective alternative to stripping down a full piece of equipment or erecting scaffolding.

In areas where the use of rope access or scaffolding is not an option, Unmanned Aerial Vehicle (UAV) drone inspections can massively reduce costs and timescales on a project.

Lifting equipment examinations

As an industry leader in the field of lifting equipment we provide our clients with thorough lifting gear examinations and management. We go further than basic examinations as it is crucial our customers have confidence in the integrity of their safety critical lifting equipment.

Both Lifting Operations and Lifting Equipment Regulations (LOLER) and Provision and Use of Work Equipment Regulations (PUWER) are ingrained in everything we do and we ensure we work to SI2307, SI2306 and SI2184.

Our lifting equipment inspections scope of supply includes:

- Thorough examinations
- Advice on how you can improve the use of your lifting equipment
- A streamlined method to manage certification packages
- Assistance with training of client personnel
- Audits and audit processes
- Written scheme of examination

DROPS surveys

An effective Dropped Objects Prevention Scheme (DROPS) plays an important role in supporting the safety practices of any asset.

Sparrows are long-standing members of DROPS and carry out a range of dropped object surveys, delivered through our online client portal. We can perform stand alone DROPS surveys or as an addition to any other work scope already taking place.

1 and 2:
Phased array inspection

3:
UAV inspection

4:
Subsea inspection

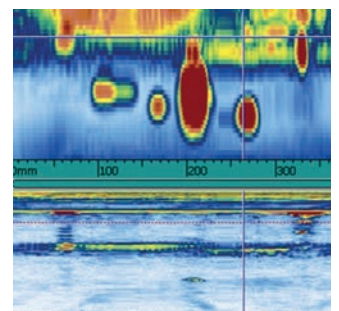
5:
Temporary access platform – tensioned netting

6:
3D laser scanning

1.



2.



3.



Underwater inspection

The services that can be provided by CSWIP 3.4U qualified underwater inspection controllers include:

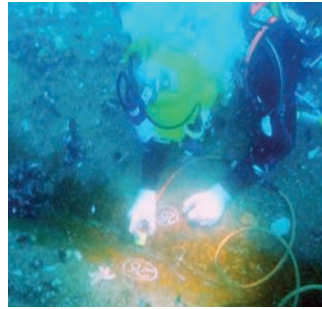
- Pre project engineering
- Generic and specific procedural creation
- Quality assurance of inspection scopes
- Data processing
- Inspection planning and briefing
- Post project final report delivery

Where required many of our 3.4U underwater inspection controllers have the below topside interpretation qualifications:

- Visual inspection – General Visual Inspection (GVI) and Close Visual Inspection (CVI)
- UT
- ECT
- ACFM
- Flooded Member Detection (FMD)
- Cathodic Protection (CP) readings
- MPI

Many of the services can be deployed by diver or Remotely Operated Underwater Vehicle (ROV) with our topside interpreters carrying out the specific technical requirements for the inspection technique(s).

4.



5.



Rope access

Many of our team of multi-skilled inspectors are Industrial Rope Access Trade Association (IRATA) rope access qualified which gives us the ability to inspect, maintain and survey inaccessible equipment quickly and efficiently to minimise downtime, ultimately reducing costs. We can provide:

- Inspection (LOLER, DROPS, NDT)
- Electrical (ATEX approved)
- Rigging (NVQ and OPITO)
- Temporary access platforms
- Design (3D laser surveys)

6.



OUR SERVICES INCLUDE:

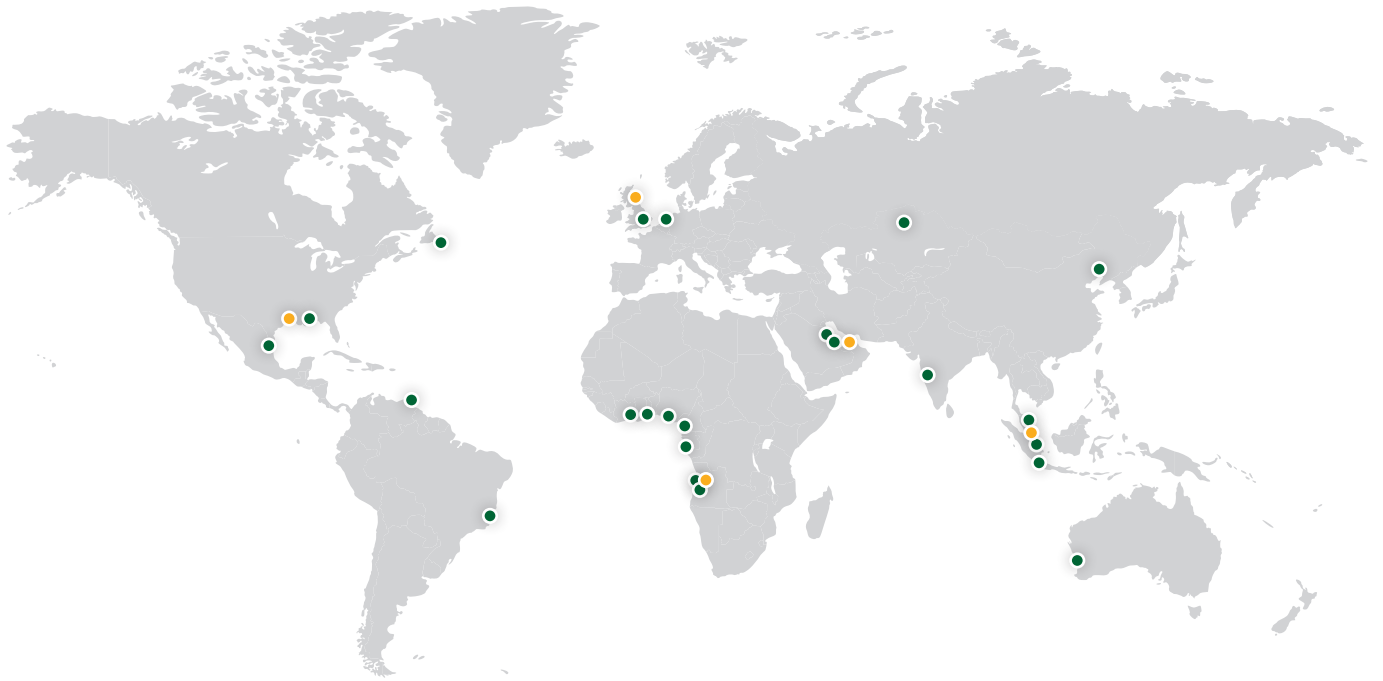
- LOLER and PUWER surveys
- Load testing
- Lifting equipment written schemes
- Crane structural inspections
- Container inspection
- Special periodic surveys and intermediates surveys
- Low Pressure (LP) and High Pressure (HP) pipework surveys
- Drilling tool inspection
- DS1 and NS2 inspection
- Hoisting and handling tool inspections
- Derrick surveys – API spec 4G
- Top drive load path survey
- Drops inspections
- Industrial rope access
- General rope access repairs
- Rope access draughtsmen, riggers, electricians, painting
- Air receiver vessel inspection
- Accumulator bottle inspection
- Tank and pit inspection
- Remote visual inspection
- Corrosion mapping
- Tensioned netting
- Containment netting
- Temporary access platforms
- Caisson inspection
- Deluge system maintenance and inspection

UTILISING:

- Visual inspection
- MPI
- LPI
- UT
- ECT
- PAUT
- Time of Flight Diffraction (ToFD)
- ACFM
- Wire rope NDT (E-Mag)
- Hardness testing
- UAV inspection
- FMD
- CP readings
- Positive Material Identification (PMI)
- 3D scanning / modelling



Local knowledge, global network



- SPARROWS HEAD OFFICE
- SPARROWS LOCATION

INTEGRATED SOLUTIONS

- Crane and lifting services management
- Deck operations management
- Reliability centred maintenance
- Mechanical handling
- Equipment upgrade
- Fault finding and repair
- Hydraulic system management

CAPABILITIES / SERVICES

- Multi-discipline engineering / design
- Crane operations
- Rigging / lifting
- Maintenance / servicing / refurbishment
- Inspection / testing / rope access
- Fluid power / hydraulics
- Site surveys
- Training / coaching

EQUIPMENT SALE AND RENTAL

- Cranes
- Crane technology
- Cable / pipe handling systems
- Fluid power / hydraulic systems
- Rigging / lifting equipment
- Mechanical handling equipment
- Spare parts / components
- Access systems

Memberships and accreditations

Sparrows Group is a DNV GL and ABS approved service provider for conventional NDT including DNV-GL 402A & 402B.



Please visit www.sparrowsgroup.com/contact to find your nearest office

