

Inspection services

LOLER, NDT and DROPS surveys

Regular examinations by qualified inspectors are essential to ensure that you:

- Maximise safety and integrity
- Ensure the reliability of safety critical equipment
- Optimise maintenance intervals to improve efficiency and reduce costs
- Provide evidence of compliance to internationally recognised standards

- Detect potential defects and take remedial actions before the equipment becomes unsafe to use.

From one-man jobs to full scale periodic structural inspections, we ensure you have confidence in the reliability of your equipment.



Sparrows Group is a DNV GL approved service supplier for thickness measurements on ships and non-destructive testing in accordance with class programme DNVGL-CP-0484.

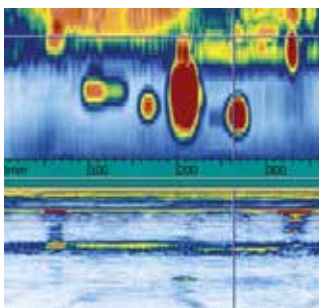
Sparrows Group is also an ABS recognised specialist for conventional NDT.

Phased array inspection



Services we deliver include:

- LOLER and PUWER surveys
- DROPS surveys
- Load testing
- Lifting equipment examination schemes
- Crane structural inspection
- Container inspection
- SPS and intermediate surveys
- L/P and H/P pipework surveys
- Hoisting and handling tool inspection
- DS1 & NS2 inspections
- Derrick surveys – API spec 4G
- API Cat III & IV mast and substructure inspections
- Top drive critical load path survey
- Air receiver vessel inspection
- Accumulator bottle inspection
- Tank and pit inspection
- Remote visual inspection
- Corrosion mapping



Phased array inspection



Temporary access platform – tensioned netting

LOLER and PUWER surveys

As a specialist in the field of lifting equipment we provide our clients with thorough examinations, management and testing.

Both Lifting Operations and Lifting Equipment Regulations (LOLER) and Provision and Use of Work Equipment Regulations (PUWER) are ingrained in everything we do and we work in compliance with SI2307, SI2306, SI2183 and SI2184.

Our scope of supply includes:

- Thorough examinations and testing
- Advice on how you can improve the use of your lifting equipment
- A streamlined method to manage certification packages
- Assistance with training of client personnel
- Audits and audit processes
- Written schemes of examination

DROPS surveys

An effective Dropped Objects Prevention Scheme (DROPS) survey plays an important role in supporting the safety practices of any asset.

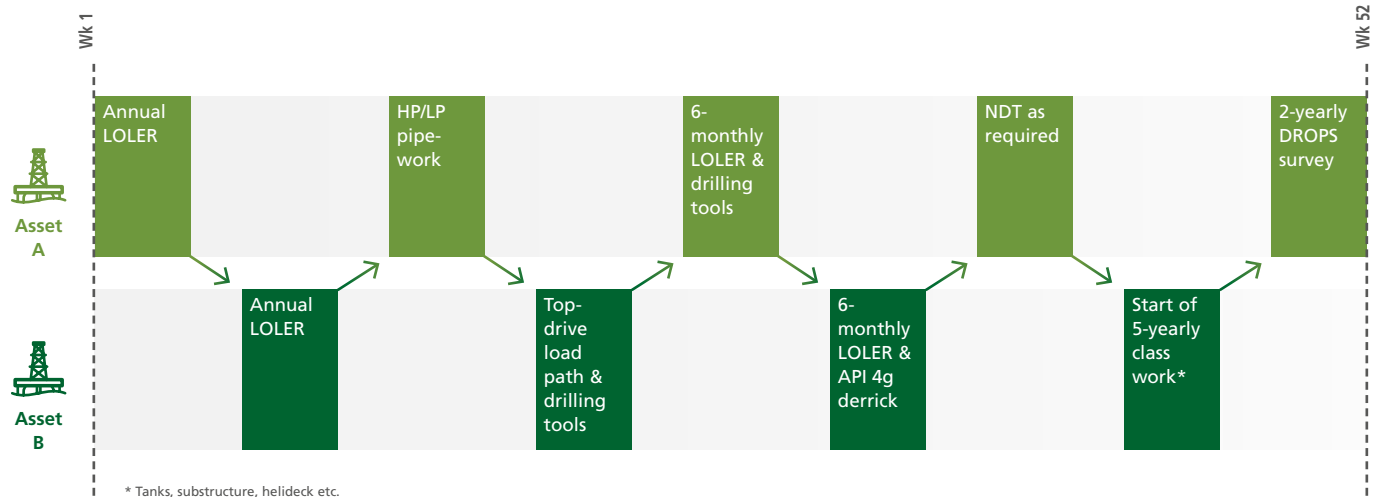
Sparrows are long-standing members of DROPS and carry out a range of dropped object surveys. We can perform stand-alone DROPS surveys or as an addition to any other work scope already taking place. We can often rectify issues as they are identified, saving time and costs.

Rig reactivation support

A one year example of how we can support multiple assets with one team. Continuity of personnel across your assets ensures consistency and quality

We support rig reactivation activities to help you achieve classification and once operational we can deliver a range of services that ensure compliance, reliability and safety. Typical reactivation services we provide include NDT of high and low pressure pipework and thickness gauging of structures.

Rig reactivation is the ideal time to ensure you have best practice inspection and maintenance strategies in place. By tackling elements of a Special Periodic Survey (SPS) each year you reduce the inspection requirements during docking while increasing reliability.



NDT techniques

Conventional and advanced Non-Destructive Testing (NDT) techniques we utilise include:

- Close Visual Inspection (CVI)
- Magnetic Particle Inspection (MPI)
- Liquid Penetrant Inspection (LPI)
- Ultrasonic Testing (UT)
- Eddy Current Inspection (ECI)
- Alternating Current Field Measurement (ACFM)
- Phased Array Ultrasonic Testing (PAUT)
- Time of Flight Diffraction (ToFD)
- Electromagnetic (E-mag)

All NDT surveys can be carried out via rope access which is a cost-effective alternative to stripping down a full piece of equipment or erecting scaffolding. In areas where the use of rope access or scaffolding is not an option, Unmanned Aerial Vehicle (UAV) drone inspections can reduce costs and timescales on a project.

Delivery model

We use the latest technology to plan and execute projects. Our software automates the process allowing us to deliver a fast and efficient service which you can follow the progress of via our client portal 'Connect'.

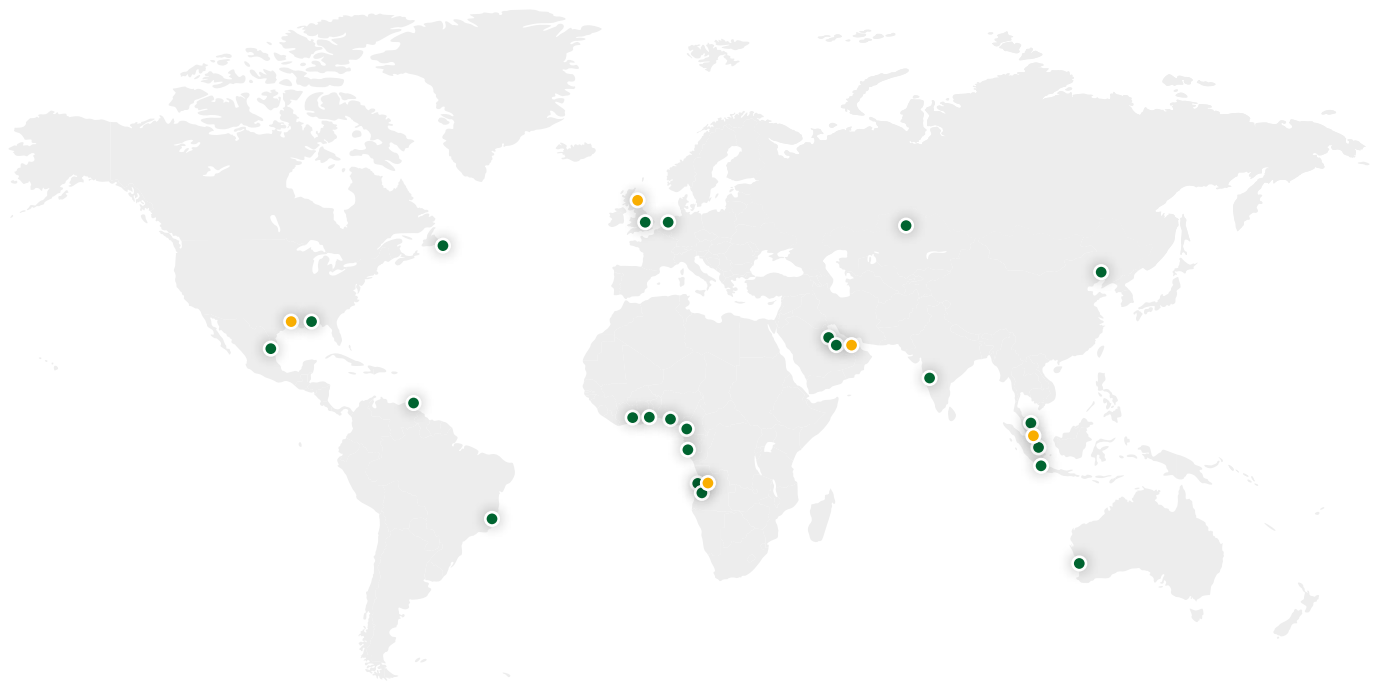
By using Zone 1 rated tablets to record our inspection and survey data while on the job, we improve accuracy and shorten the time required to compile reports.

Connect is interactive, allowing you to upload supporting documents such as drawings, materials lists, photographs, calibration reports etc. Real time reporting can be made available via Connect when required. Different levels of access can be set up for unique users – they can have access to one location or a number of facilities. It also alerts you when inspections or survey are due, making sure you don't miss anything.

Connect provides 24/7 online access to all your inspection records



Local knowledge, global network



- SPARROWS HEAD OFFICE
- SPARROWS LOCATION

INTEGRATED SOLUTIONS

- Crane and lifting services management
- Deck operations management
- Reliability centred maintenance
- Mechanical handling
- Equipment upgrade
- Fault finding and repair
- Hydraulic system management

CAPABILITIES / SERVICES

- Multi-discipline engineering / design
- Crane operations
- Rigging / lifting
- Maintenance / servicing / refurbishment
- Inspection / testing / rope access
- Fluid power / hydraulics
- Site surveys
- Training / coaching

EQUIPMENT SALE AND RENTAL

- Cranes
- Crane technology
- Cable / pipe handling systems
- Fluid power / hydraulic systems
- Rigging / lifting equipment
- Mechanical handling equipment
- Spare parts / components
- Access systems

MEMBERSHIPS AND ACCREDITATIONS



Please visit www.sparrowsgroup.com/contact to find your nearest office

